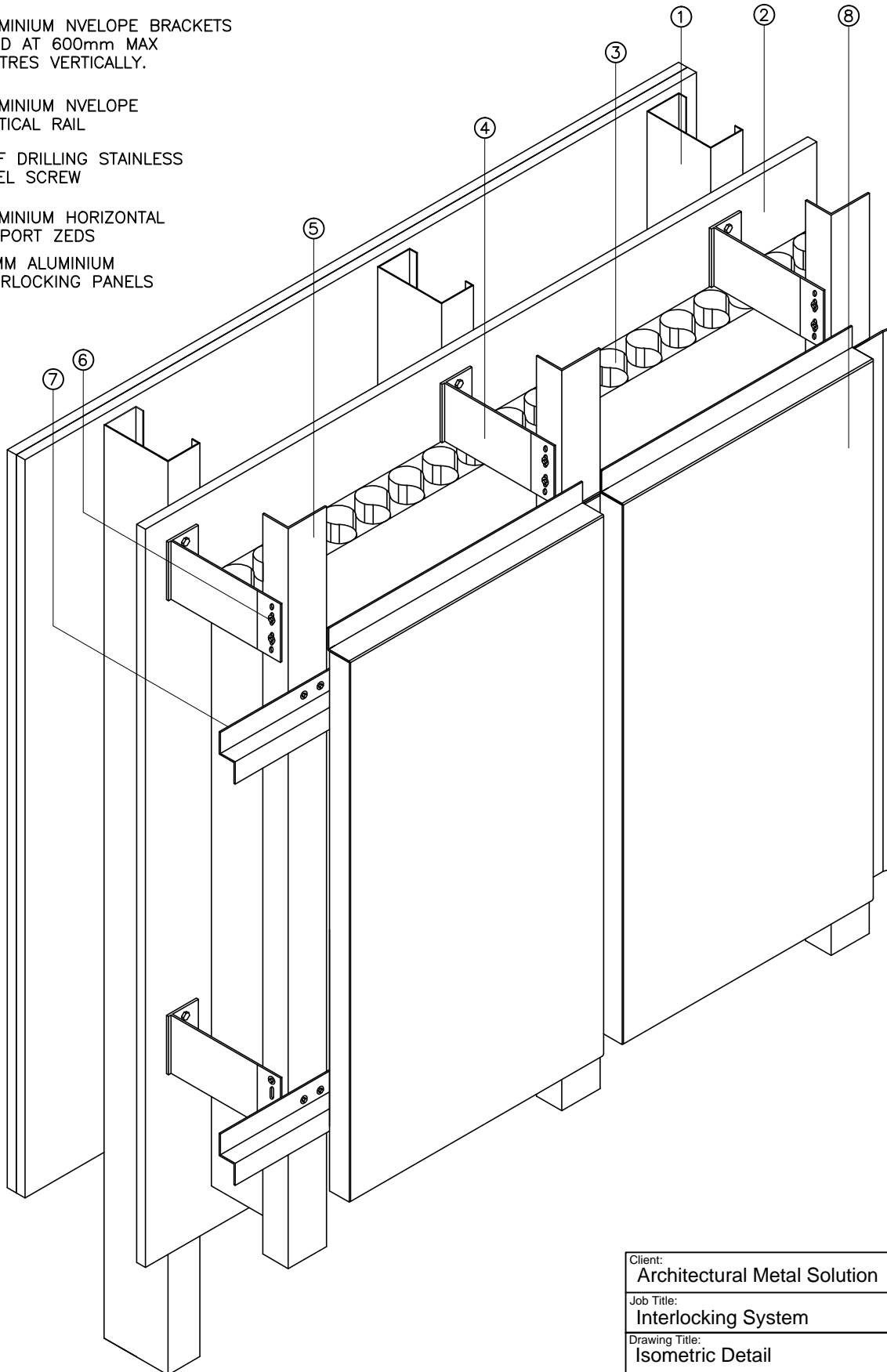

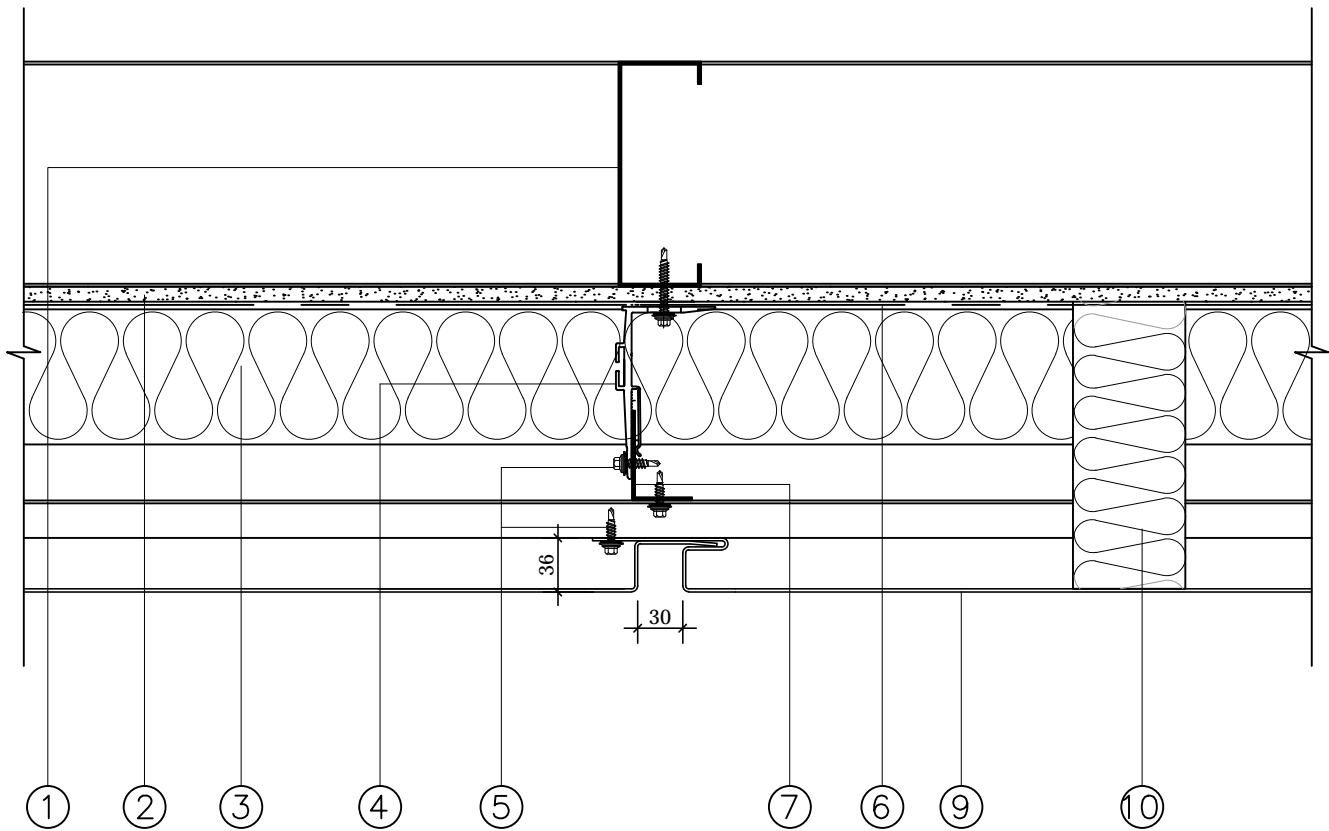


- ① SFS FRAME
- ② CEMENT PARTICLE BOARD
- ③ INSULATION
- ④ ALUMINIUM NVELOPE BRACKETS
FIXED AT 600mm MAX
CENTRES VERTICALLY.
- ⑤ ALUMINIUM NVELOPE
VERTICAL RAIL
- ⑥ SELF DRILLING STAINLESS
STEEL SCREW
- ⑦ ALUMINIUM HORIZONTAL
SUPPORT ZEDS
- ⑧ 1.5MM ALUMINIUM
INTERLOCKING PANELS



AMS-02 INTERLOCKING PANEL SYSTEM


Client: Architectural Metal Solution	Job No: -	
Job Title: Interlocking System	Date: 17/08/2018	
Drawing Title: Isometric Detail	Dwg. No.: AMS-02-01	
Material: 1.5mm Aluminium	Finish: PPC	
 CONCEPT TO CONSTRUCTION www.amsproducts.co.uk	Sheet Size: A4	Revision: -
	Scale: NTS	Drawn By: -
Tel: 01268 288661 Fax: 01268 287748		

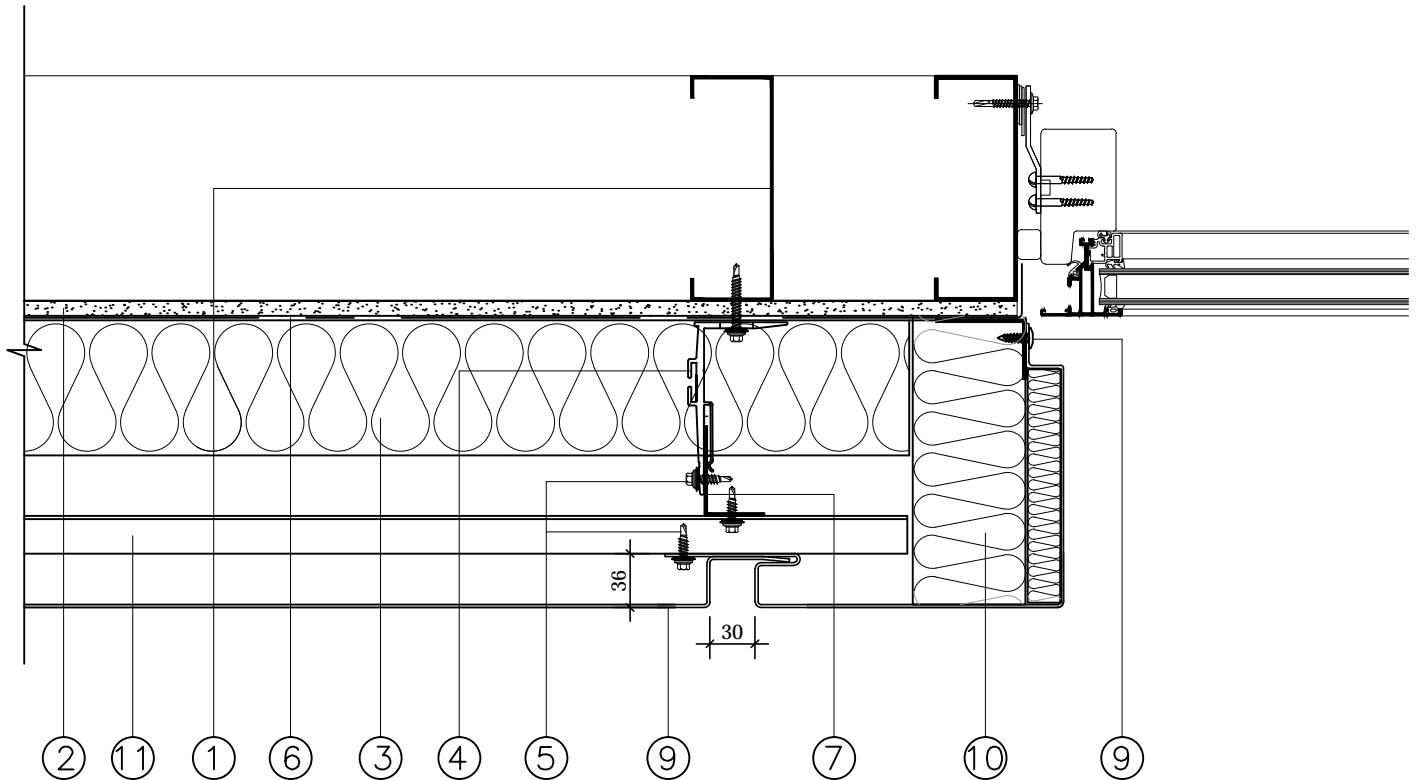


AMS-02 VERTICAL JOINT

- ① SFS FRAME
- ② CEMENT PARTICLE BOARD
- ③ INSULATION
- ④ ALUMINIUM NVELOPE BRACKETS
FIXED AT 600mm MAX
CENTRES VERTICALLY.
- ⑤ SELF DRILLING STAINLESS
STEEL SCREW
- ⑥ BREATHER MEMBRANE
- ⑦ ALUMINIUM NVELOPE
VERTICAL RAIL
- ⑧ COLOUR CODED STAINLESS
STEEL SCREW
- ⑨ 1.5MM ALUMINIUM
INTERLOCKING PANELS
- ⑩ VERTICAL CAVITY BARRIER
- ⑪ ALUMINIUM HORIZONTAL
SUPPORT ZED

AMS-02 INTERLOCKING PANEL SYSTEM


Client: Architectural Metal Solution	Job No: -	
Job Title: Interlocking System	Date: 17/08/2018	
Drawing Title: AMS-02 Vertical Joint Detail	Dwg. No.: AMS-02-02	
Material: 1.5mm Aluminium	Finish: PPC	
 CONCEPT TO CONSTRUCTION www.amsproducts.co.uk	Sheet Size: A4	Revision: -
	Scale: NTS	Drawn By: -
Tel: 01268 28861 Fax: 01268 28748		

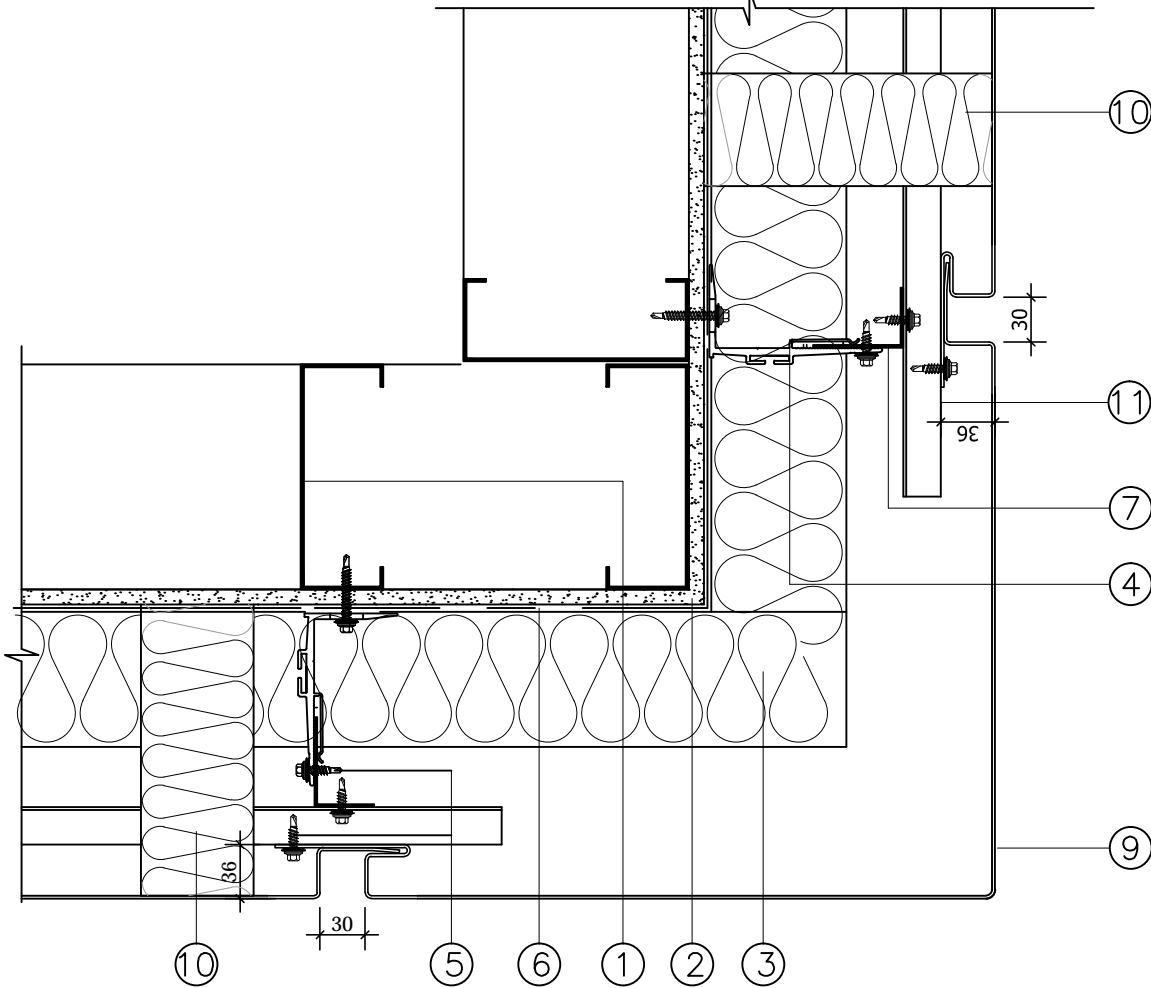


AMS-02 WINDOW JAMB DETAIL

- ① SFS FRAME
- ② CEMENT PARTICLE BOARD
- ③ INSULATION
- ④ ALUMINIUM NVELOPE BRACKETS
FIXED AT 600mm MAX
CENTRES VERTICALLY.
- ⑤ SELF DRILLING STAINLESS
STEEL SCREW
- ⑥ BREATHER MEMBRANE
- ⑦ ALUMINIUM NVELOPE
VERTICAL RAIL
- ⑧ COLOUR CODED STAINLESS
STEEL SCREW
- ⑨ 1.5MM ALUMINIUM
INTERLOCKING PANELS
- ⑩ VERTICAL CAVITY BARRIER
- ⑪ ALUMINIUM HORIZONTAL
SUPPORT ZED

AMS-02 INTERLOCKING PANEL SYSTEM

Client: Architectural Metal Solution	Job No: -	
Job Title: Interlocking System	Date: 17/08/2018	
Drawing Title: AMS-02 Window Jamb Detail	Dwg. No.: AMS-02-03	
Material: 1.5mm Aluminium	Finish: PPC	
 CONCEPT TO CONSTRUCTION www.amsproducts.co.uk	Sheet Size: A4	Revision: -
	Scale: NTS	Drawn By: -
Tel: 01268 288661 Fax: 01268 287748		



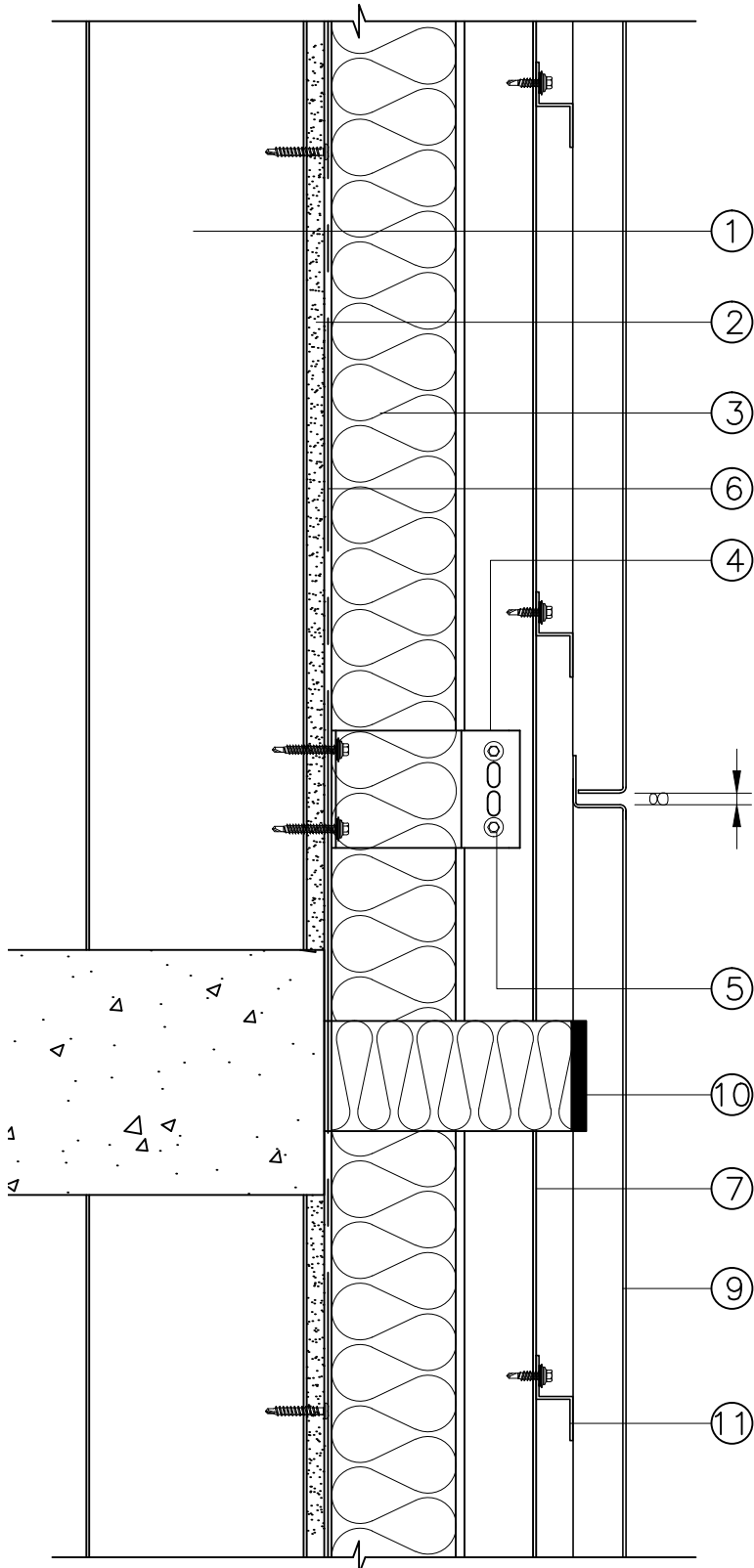
AMS-02 EXTERNAL CORNER DETAIL

- ① SFS FRAME
- ② CEMENT PARTICLE BOARD
- ③ INSULATION
- ④ ALUMINIUM NVELOPE BRACKETS
FIXED AT 600mm MAX
CENTRES VERTICALLY.
- ⑤ SELF DRILLING STAINLESS
STEEL SCREW
- ⑥ BREATHER MEMBRANE
- ⑦ ALUMINIUM NVELOPE
VERTICAL RAIL
- ⑧ COLOUR CODED STAINLESS
STEEL SCREW
- ⑨ 1.5MM ALUMINIUM
INTERLOCKING PANELS
- ⑩ VERTICAL CAVITY BARRIER
- ⑪ ALUMINIUM HORIZONTAL
SUPPORT ZED

AMS-02 INTERLOCKING PANEL SYSTEM

Client: Architectural Metal Solution		Job No: -
Job Title: Interlocking System		Date: 17/08/2018
Drawing Title: AMS-02 External Corner Detail		Dwg. No.: AMS-02-04
Material: 1.5mm Aluminium		Finish: PPC
 CONCEPT TO CONSTRUCTION www.amsproducts.co.uk	Sheet Size: A4	Revision: -
	Scale: NTS	Drawn By: -


Tel: 01268 28861
Fax: 01268 287748

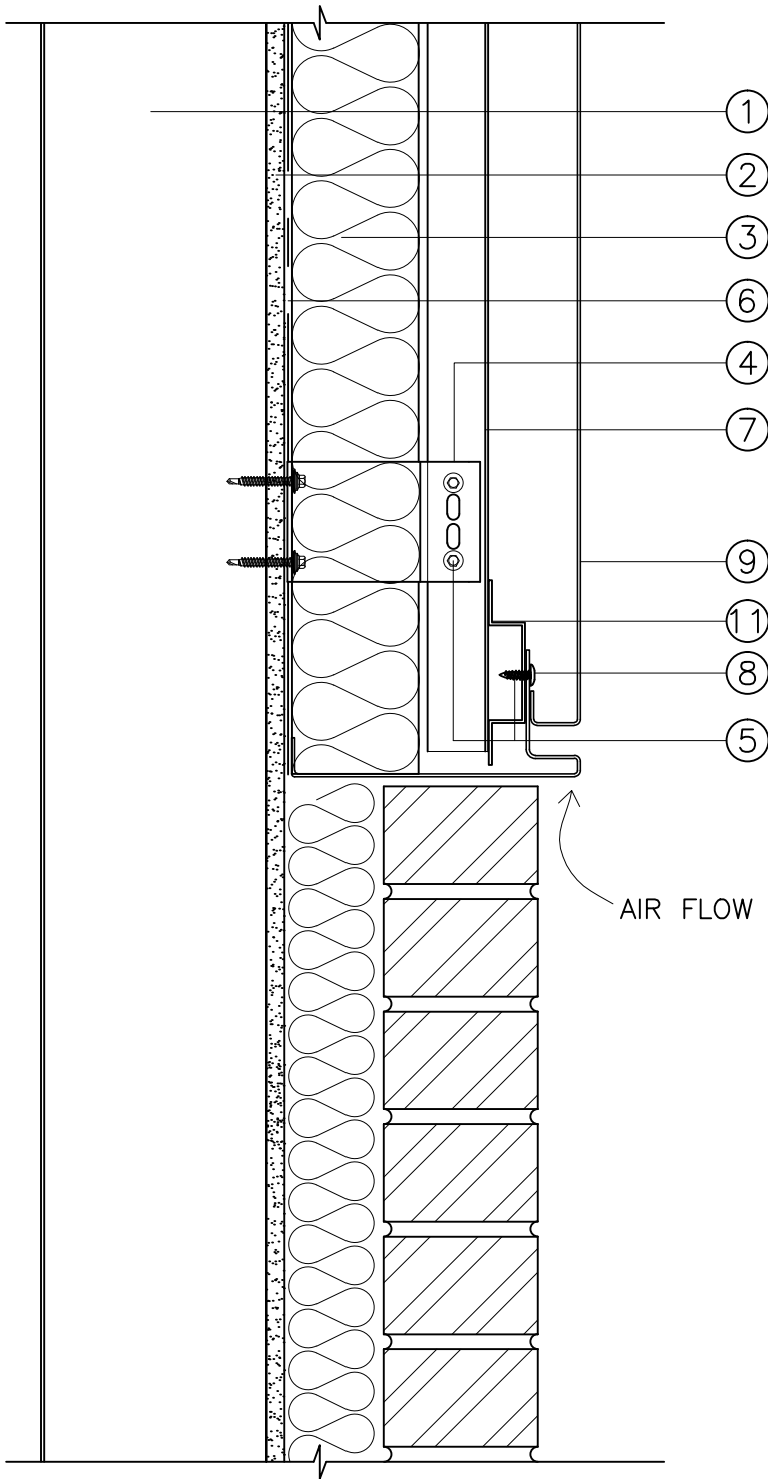


AMS-02 HORIZONTAL JOINT

- ① SFS FRAME
- ② CEMENT PARTICLE BOARD
- ③ INSULATION
- ④ ALUMINIUM NVELOPE BRACKETS
FIXED AT 600mm MAX
CENTRES VERTICALLY.
- ⑤ SELF DRILLING STAINLESS
STEEL SCREW
- ⑥ BREATHER MEMBRANE
- ⑦ ALUMINIUM NVELOPE
VERTICAL RAIL
- ⑧ COLOUR CODED STAINLESS
STEEL SCREW
- ⑨ 1.5MM ALUMINIUM
INTERLOCKING PANELS
- ⑩ OPEN STATE CAVITY BARRIER
- ⑪ ALUMINIUM HORIZONTAL
SUPPORT ZED

AMS-02 INTERLOCKING PANEL SYSTEM

Client: Architectural Metal Solution	Job No: -	
Job Title: Interlocking System	Date: 17/08/2018	
Drawing Title: AMS-02 Horizontal Joint	Dwg. No.: AMS-02-05	
Material: 1.5mm Aluminium	Finish: PPC	
 CONCEPT TO CONSTRUCTION www.amsproducts.co.uk	Sheet Size: A4	Revision: -
	Scale: NTS	Drawn By: -
Tel: 01268 28861 Fax: 01268 28748		

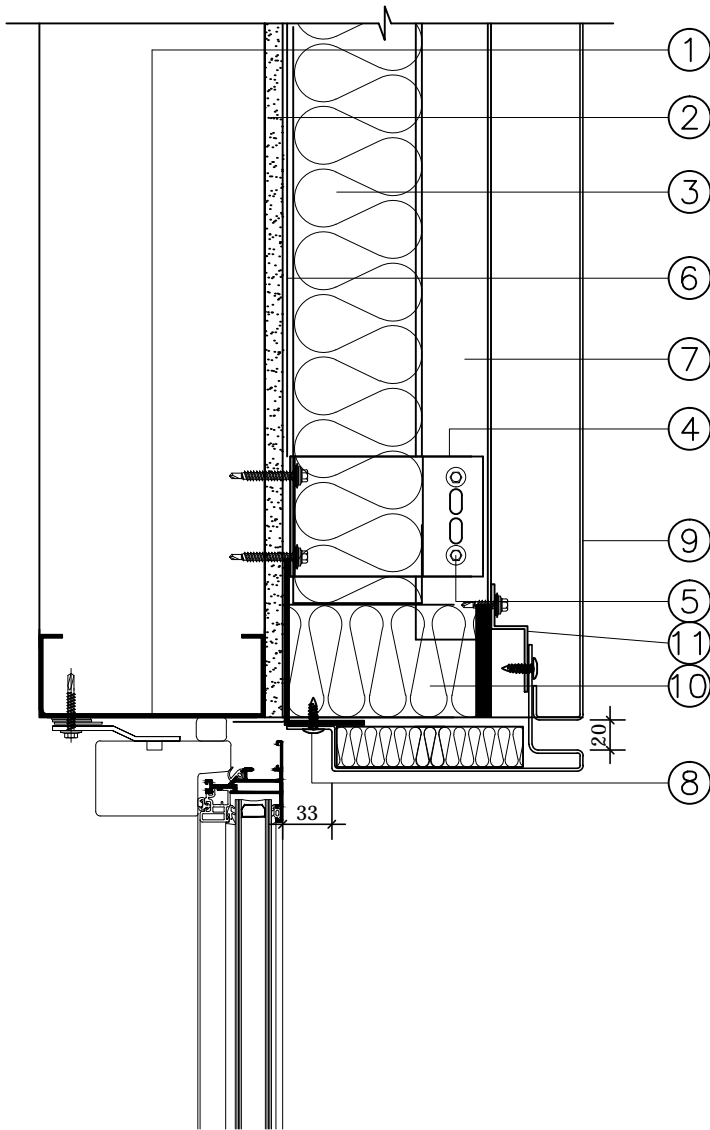


AMS-02 SILL DETAIL

- ① SFS FRAME
- ② CEMENT PARTICLE BOARD
- ③ INSULATION
- ④ ALUMINIUM NVELOPE BRACKETS FIXED AT 600mm MAX CENTRES VERTICALLY.
- ⑤ SELF DRILLING STAINLESS STEEL SCREW
- ⑥ BREATHER MEMBRANE
- ⑦ ALUMINIUM NVELOPE VERTICAL RAIL
- ⑧ COLOUR CODED STAINLESS STEEL SCREW
- ⑨ 1.5MM ALUMINIUM INTERLOCKING PANELS
- ⑩ CAVITY BARRIER
- ⑪ ALUMINIUM HORIZONTAL SUPPORT ZED

AMS-02 INTERLOCKING PANEL SYSTEM

Client: Architectural Metal Solution	Job No: -	
Job Title: Interlocking System	Date: 17/08/2018	
Drawing Title: AMS-02 Sill Detail	Dwg. No.: AMS-02-06	
Material: 1.5mm Aluminium	Finish: PPC	
 CONCEPT TO CONSTRUCTION www.amsproducts.co.uk	Sheet Size: A4	Revision: -
	Scale: NTS	Drawn By: -
Tel: 01268 288661 Fax: 01268 287748		

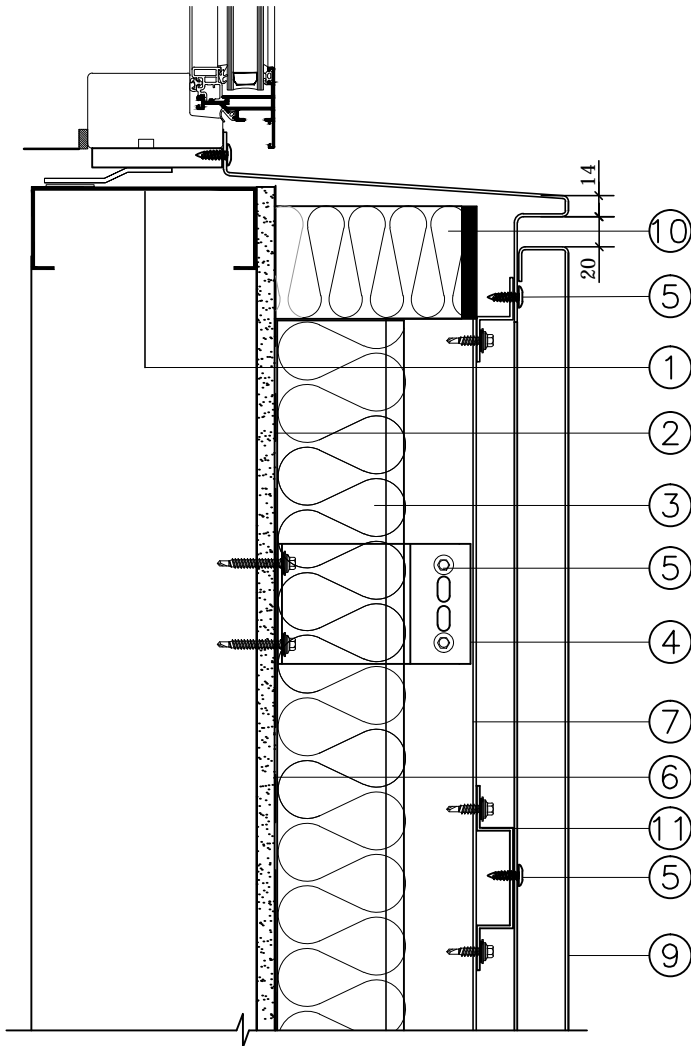


AMS-02 WINDOW HEAD DETAIL

- ① SFS FRAME
- ② CEMENT PARTICLE BOARD
- ③ INSULATION
- ④ ALUMINIUM NVELOPE BRACKETS
FIXED AT 600mm MAX
CENTRES VERTICALLY.
- ⑤ SELF DRILLING STAINLESS
STEEL SCREW
- ⑥ BREATHER MEMBRANE
- ⑦ ALUMINIUM NVELOPE
VERTICAL RAIL
- ⑧ COLOUR CODED STAINLESS
STEEL SCREW
- ⑨ 1.5MM ALUMINIUM
INTERLOCKING PANELS
- ⑩ OPEN STATE CAVITY BARRIER
- ⑪ ALUMINIUM HORIZONTAL
SUPPORT ZED

AMS-02 INTERLOCKING PANEL SYSTEM

Client: Architectural Metal Solution	Job No: -	
Job Title: Interlocking System	Date: 17/08/2018	
Drawing Title: AMS-02 Window Head Detail	Dwg. No.: AMS-02-07	
Material: 1.5mm Aluminium	Finish: PPC	
 CONCEPT TO CONSTRUCTION www.amsproducts.co.uk	Sheet Size: A4	Revision: -
	Scale: NTS	Drawn By: -
Tel: 01268 288661 Fax: 01268 287748		



AMS-02 WINDOW SILL DETAIL

- ① SFS FRAME
- ② CEMENT PARTICLE BOARD
- ③ INSULATION
- ④ ALUMINIUM NVELOPE BRACKETS
FIXED AT 600mm MAX
CENTRES VERTICALLY.
- ⑤ SELF DRILLING STAINLESS
STEEL SCREW
- ⑥ BREATHER MEMBRANE
- ⑦ ALUMINIUM NVELOPE
VERTICAL RAIL
- ⑧ COLOUR CODED STAINLESS
STEEL SCREW
- ⑨ 1.5MM ALUMINIUM
INTERLOCKING PANELS
- ⑩ OPEN STATE CAVITY BARRIER
- ⑪ ALUMINIUM HORIZONTAL
SUPPORT ZED

AMS-02 INTERLOCKING PANEL SYSTEM

Client: Architectural Metal Solution	Job No: -	
Job Title: Interlocking System	Date: 17/08/2018	
Drawing Title: AMS-02 Window Sill Detail	Dwg. No.: AMS-02-08	
Material: 1.5mm Aluminium	Finish: PPC	
 CONCEPT TO CONSTRUCTION www.amsproducts.co.uk	Sheet Size: A4	Revision: -
	Scale: NTS	Drawn By: -
Tel: 01268 288661 Fax: 01268 287748		