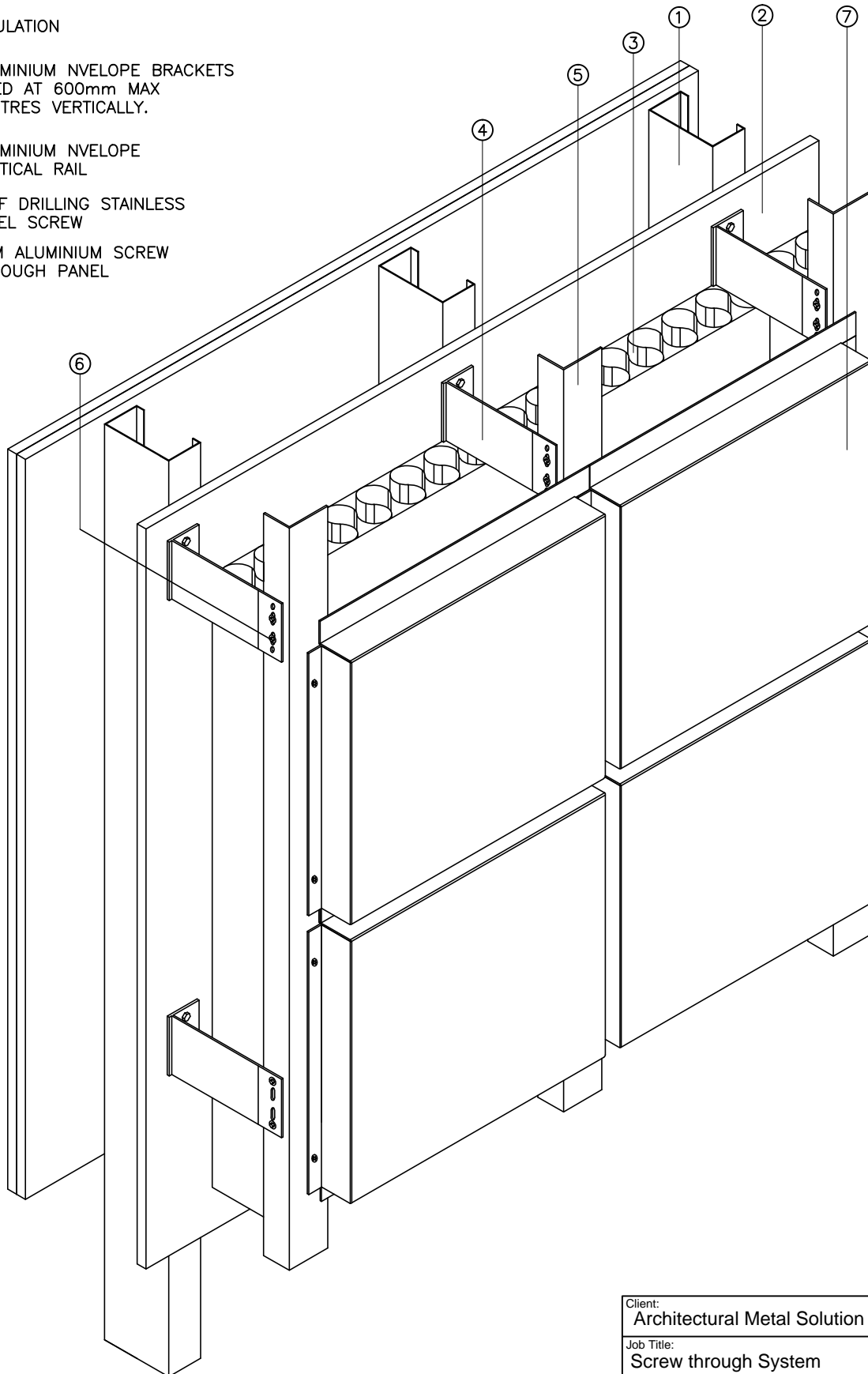
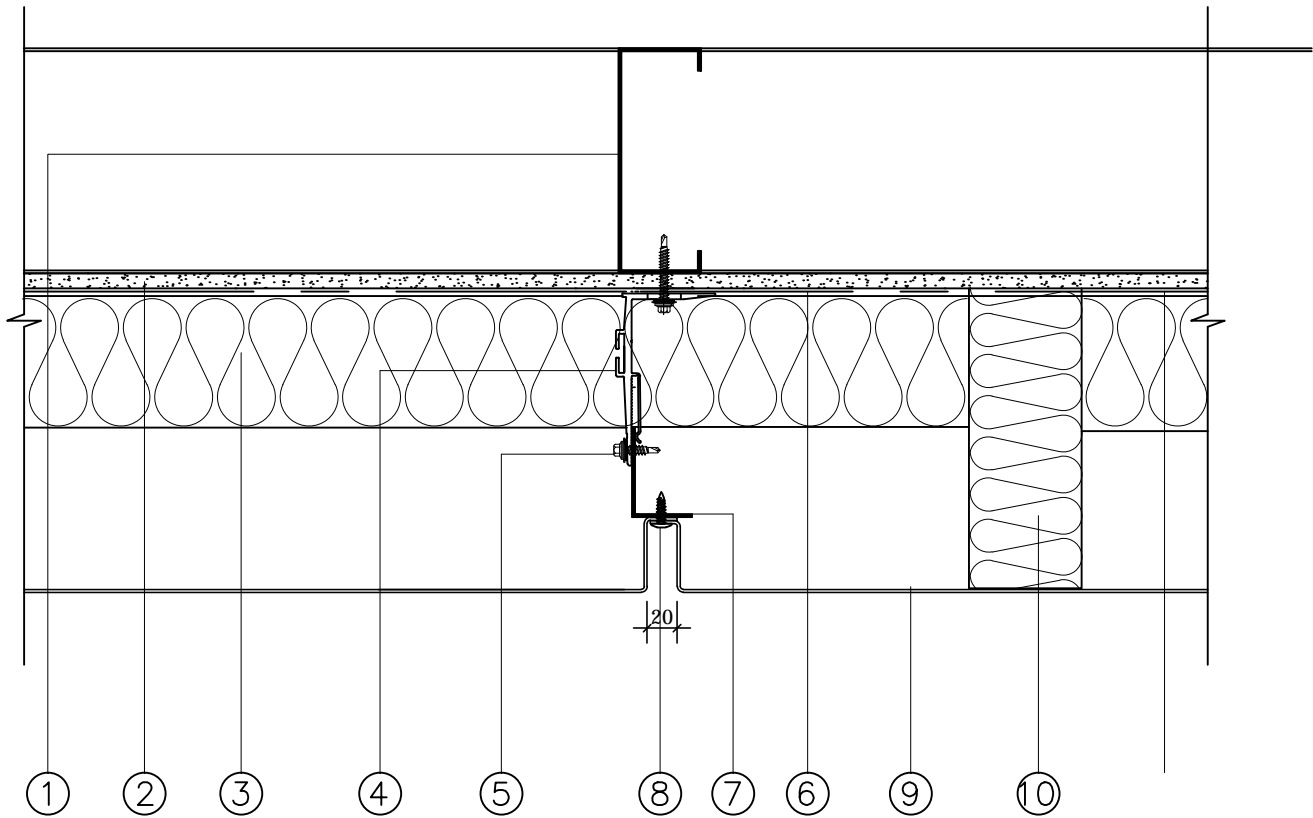


- ① SFS FRAME
- ② CEMENT PARTICLE BOARD
- ③ INSULATION
- ④ ALUMINIUM NVELOPE BRACKETS  
FIXED AT 600mm MAX  
CENTRES VERTICALLY.
- ⑤ ALUMINIUM NVELOPE  
VERTICAL RAIL
- ⑥ SELF DRILLING STAINLESS  
STEEL SCREW
- ⑦ 2MM ALUMINIUM SCREW  
THROUGH PANEL



AMS-03 SCREW THROUGH SYSTEM


Client: Architectural Metal Solution	Job No: -
Job Title: Screw through System	Date: 17/08/2018
Drawing Title: Isometric detail	Dwg. No.: AMS-03-01
Material: 2mm Aluminium	Finish: PPC
 <small>CONCEPT TO CONSTRUCTION www.amsproducts.co.uk</small>	Sheet Size: A4
	Revision: -
Scale: NTS	Drawn By: -
<small>Tel: 01268 28861 Fax: 01268 287748</small>	

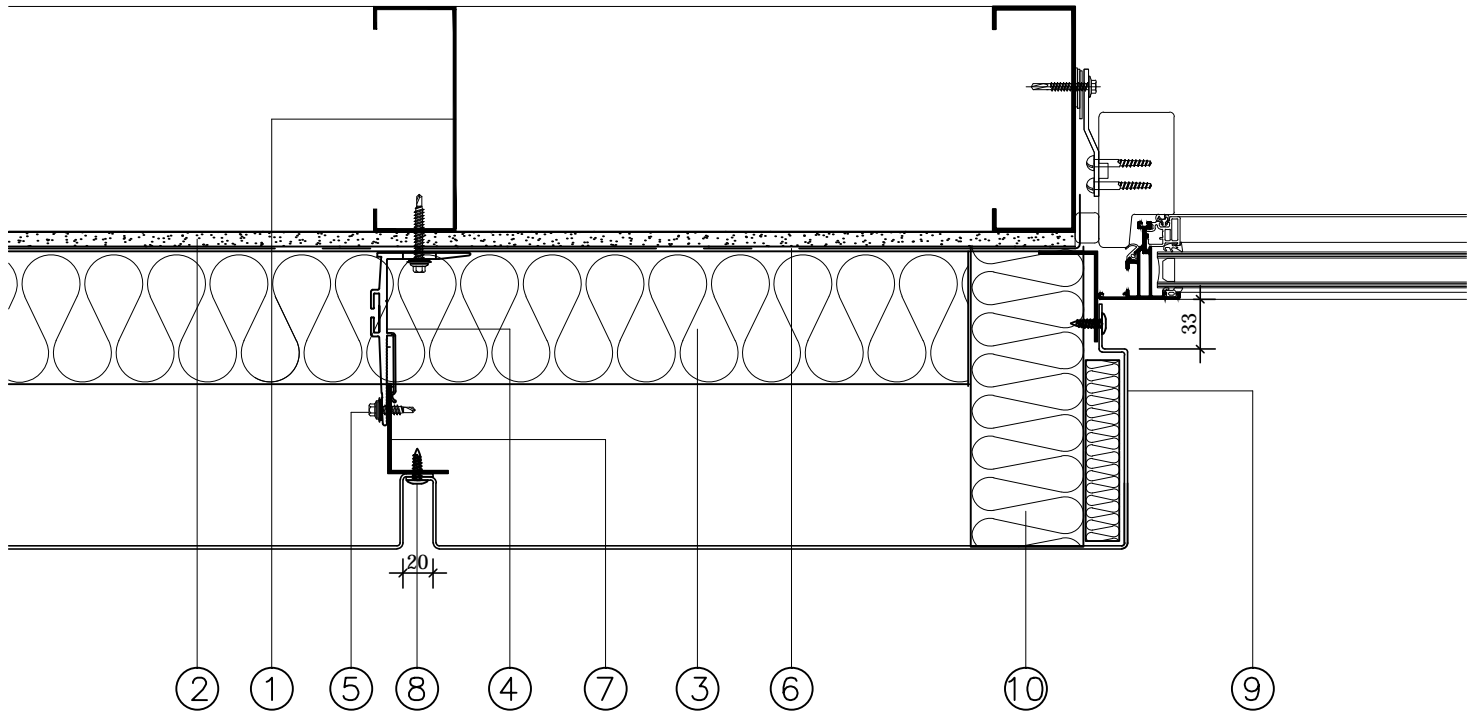


### AMS-03 VERTICAL JOINT

- ① SFS FRAME
- ② CEMENT PARTICLE BOARD
- ③ INSULATION
- ④ ALUMINIUM NVELOPE BRACKETS  
FIXED AT 600mm MAX  
CENTRES VERTICALLY.
- ⑤ SELF DRILLING STAINLESS  
STEEL SCREW
- ⑥ BREATHER MEMBRANE
- ⑦ ALUMINIUM NVELOPE  
VERTICAL RAIL
- ⑧ COLOUR CODED STAINLESS  
STEEL SCREW
- ⑨ 2MM ALUMINIUM SCREW  
THROUGH PANEL
- ⑩ VERTICAL CAVITY BARRIER

### AMS-03 SCREW THROUGH SYSTEM


Client: Architectural Metal Solution	Job No: -
Job Title: Screw through system	Date: 17/08/2018
Drawing Title: AMS-03 Vertical Joint Detail	Dwg. No.: AMS-03-02
Material: 2mm Aluminium	Finish: PPC
 <small>CONCEPT TO CONSTRUCTION www.amsproducts.co.uk</small>	Sheet Size: A4
	Revision: -
Scale: NTS	Drawn By: -
<small>Tel: 01268 288661 Fax: 01268 287748</small>	

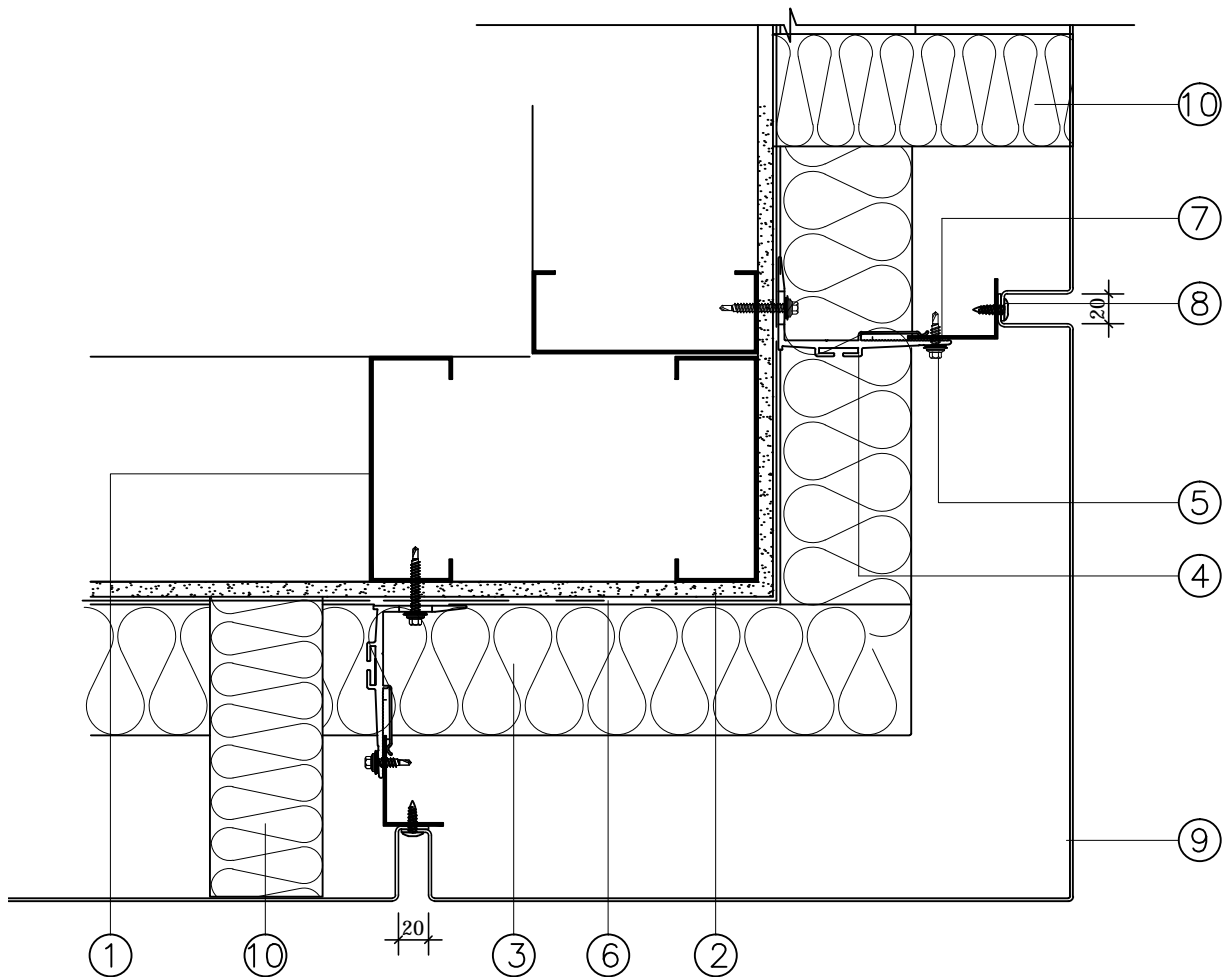


### AMS-03 WINDOW JAMB DETAIL

- ① SFS FRAME
- ② CEMENT PARTICLE BOARD
- ③ INSULATION
- ④ ALUMINIUM NVELOPE BRACKETS  
FIXED AT 600mm MAX  
CENTRES VERTICALLY.
- ⑤ SELF DRILLING STAINLESS  
STEEL SCREW
- ⑥ BREATHER MEMBRANE
- ⑦ ALUMINIUM NVELOPE  
VERTICAL RAIL
- ⑧ COLOUR CODED STAINLESS  
STEEL SCREW
- ⑨ 2MM ALUMINIUM SCREW  
THROUGH PANEL
- ⑩ VERTICAL CAVITY BARRIER

### AMS-03 SCREW THROUGH SYSTEM


Client: Architectural Metal Solution	Job No: -
Job Title: Screw through system	Date: 17/08/2018
Drawing Title: AMS-03 Window Jamb Detail	Dwg. No.: AMS-03-03
Material: 2mm Aluminium	Finish: PPC
 <small>CONCEPT TO CONSTRUCTION www.amsproducts.co.uk</small>	Sheet Size: A4
	Scale: NTS
<small>Tel: 01268 288661 Fax: 01268 287748</small>	Revision: - Drawn By: -

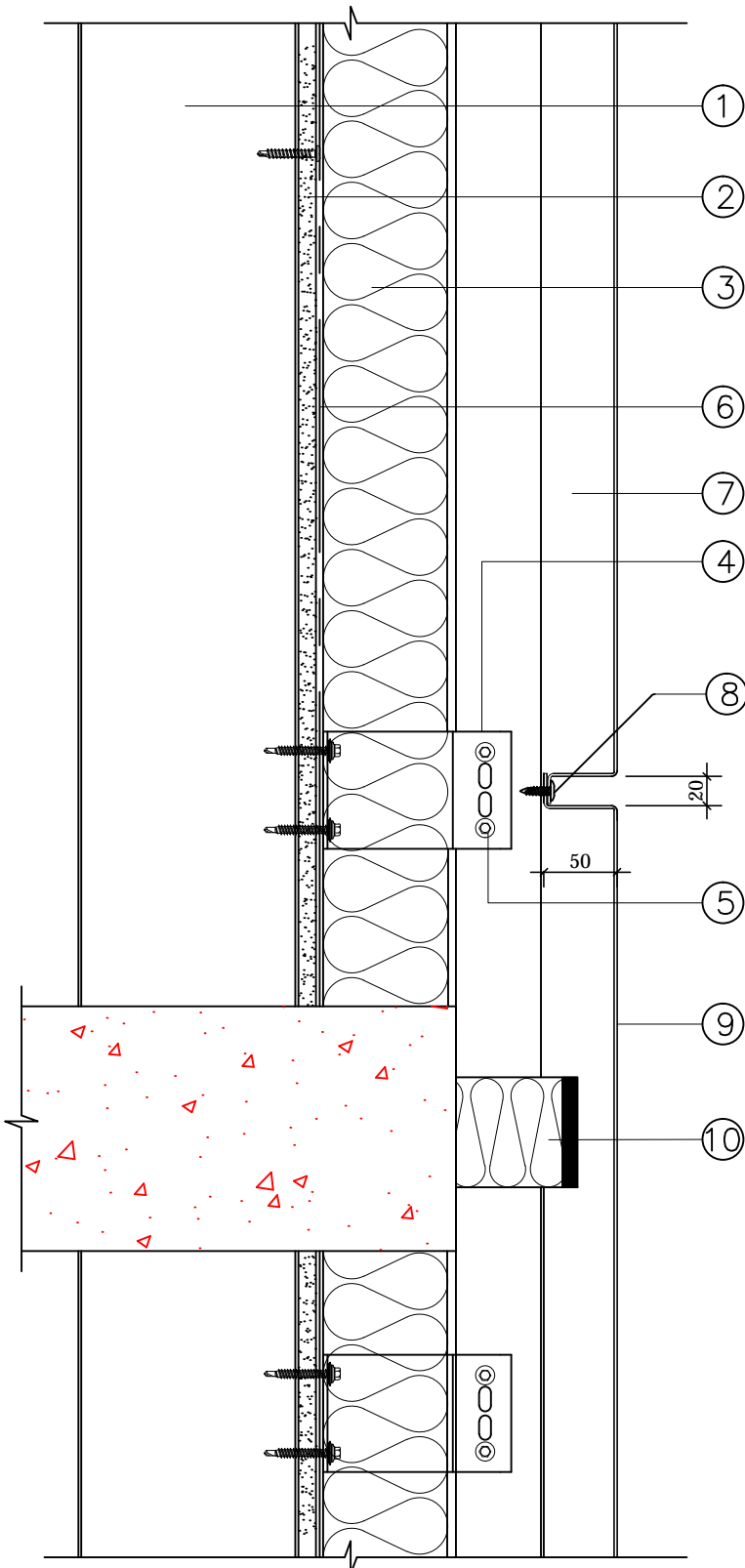


### AMS-03 EXTERNAL CORNER DETAIL

- ① SFS FRAME
- ② CEMENT PARTICLE BOARD
- ③ INSULATION
- ④ ALUMINIUM NVELOPE BRACKETS  
FIXED AT 600mm MAX  
CENTRES VERTICALLY.
- ⑤ SELF DRILLING STAINLESS  
STEEL SCREW
- ⑥ BREATHER MEMBRANE
- ⑦ ALUMINIUM NVELOPE  
VERTICAL RAIL
- ⑧ COLOUR CODED STAINLESS  
STEEL SCREW
- ⑨ 2MM ALUMINIUM SCREW  
THROUGH PANEL
- ⑩ VERTICAL CAVITY BARRIER

### AMS-03 SCREW THROUGH SYSTEM


Client: Architectural Metal Solution	Job No: -	
Job Title: Screw through system	Date: 17/08/2018	
Drawing Title: AMS-03 External Corner Detail	Dwg. No.: AMS-03-04	
Material: 2mm Aluminium	Finish: PPC	
 <small>CONCEPT TO CONSTRUCTION www.amsproducts.co.uk</small>	Sheet Size: A4	Revision: -
	Scale: NTS	Drawn By: -
	<small>Tel: 01268 28861 Fax: 01268 287748</small>	

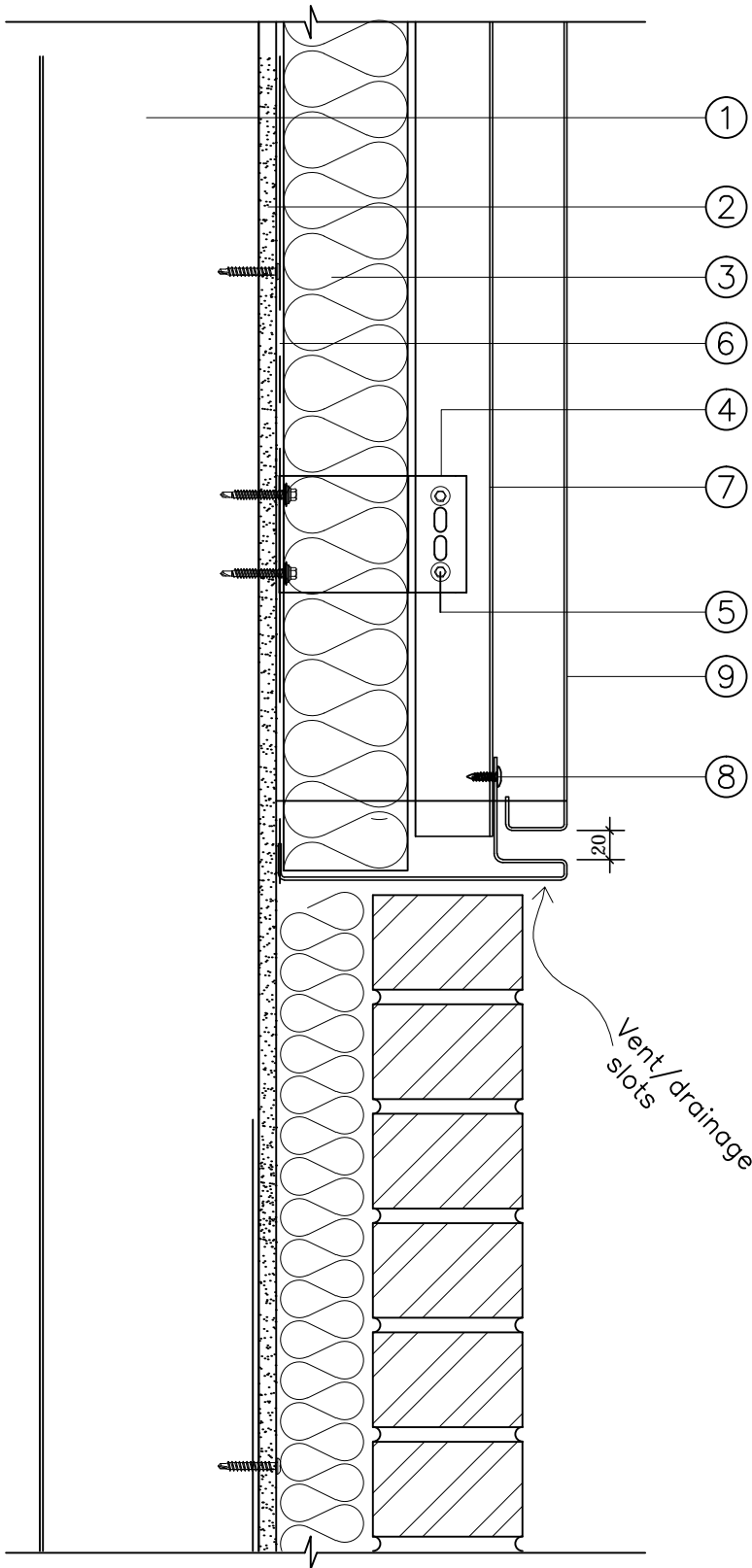


## AMS-03 HORIZONTAL JOINT

- ① SFS FRAME
- ② CEMENT PARTICLE BOARD
- ③ INSULATION
- ④ ALUMINIUM NVELOPE BRACKETS  
FIXED AT 600mm MAX  
CENTRES VERTICALLY.
- ⑤ SELF DRILLING STAINLESS  
STEEL SCREW
- ⑥ BREATHER MEMBRANE
- ⑦ ALUMINIUM NVELOPE  
VERTICAL RAIL
- ⑧ COLOUR CODED STAINLESS  
STEEL SCREW
- ⑨ 2MM ALUMINIUM SCREW  
THROUGH PANEL
- ⑩ OPEN STATE CAVITY BARRIER

## AMS-03 SCREW THROUGH SYSTEM


Client: Architectural Metal Solution	Job No: -
Job Title: Screw through system	Date: 17/08/2018
Drawing Title: AMS-03 Horizontal Joint	Dwg. No.: AMS-03-05
Material: 2mm Aluminium	Finish: PPC
 <small>CONCEPT TO CONSTRUCTION www.amsproducts.co.uk</small>	Sheet Size: A4
	Revision: -
Scale: NTS	Drawn By: -
<small>Tel: 01268 28861 Fax: 01268 287748</small>	



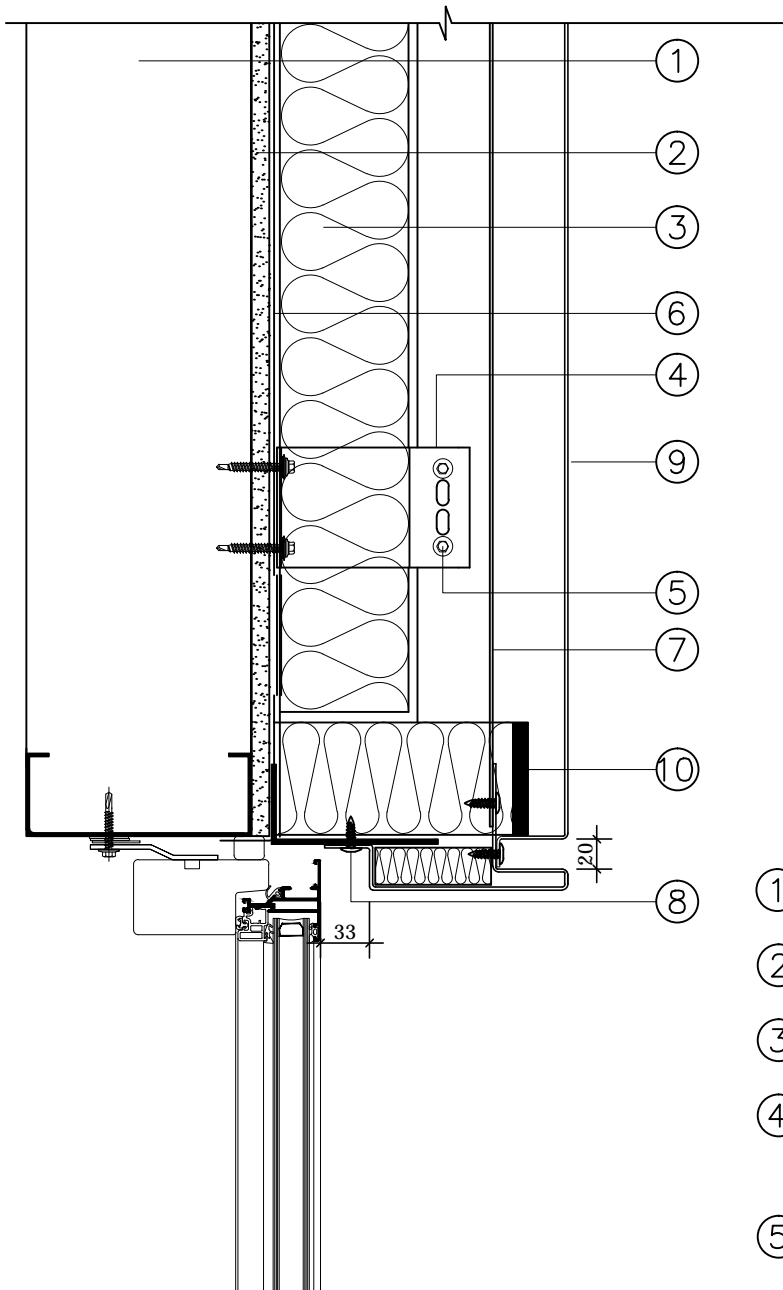
## AMS-03 CILL DETAIL

- ① SFS FRAME
- ② CEMENT PARTICLE BOARD
- ③ INSULATION
- ④ ALUMINIUM NVELOPE BRACKETS  
FIXED AT 600mm MAX  
CENTRES VERTICALLY.
- ⑤ SELF DRILLING STAINLESS  
STEEL SCREW
- ⑥ BREATHER MEMBRANE
- ⑦ ALUMINIUM NVELOPE  
VERTICAL RAIL
- ⑧ COLOUR CODED STAINLESS  
STEEL SCREW
- ⑨ 2MM ALUMINIUM SCREW  
THROUGH PANEL

AMS-03 SCREW THROUGH SYSTEM

Client: Architectural Metal Solution	Job No: -
Job Title: Screw through system	Date: 17/08/2018
Drawing Title: AMS-03 Cill Detail	Dwg. No.: AMS-03-06
Material: 2mm Aluminium	Finish: PPC
 <small>CONCEPT TO CONSTRUCTION www.amsproducts.co.uk</small>	Sheet Size: A4
	Scale: NTS
	Revision: -
	Drawn By: -


Tel: 01268 288661  
Fax: 01268 287748

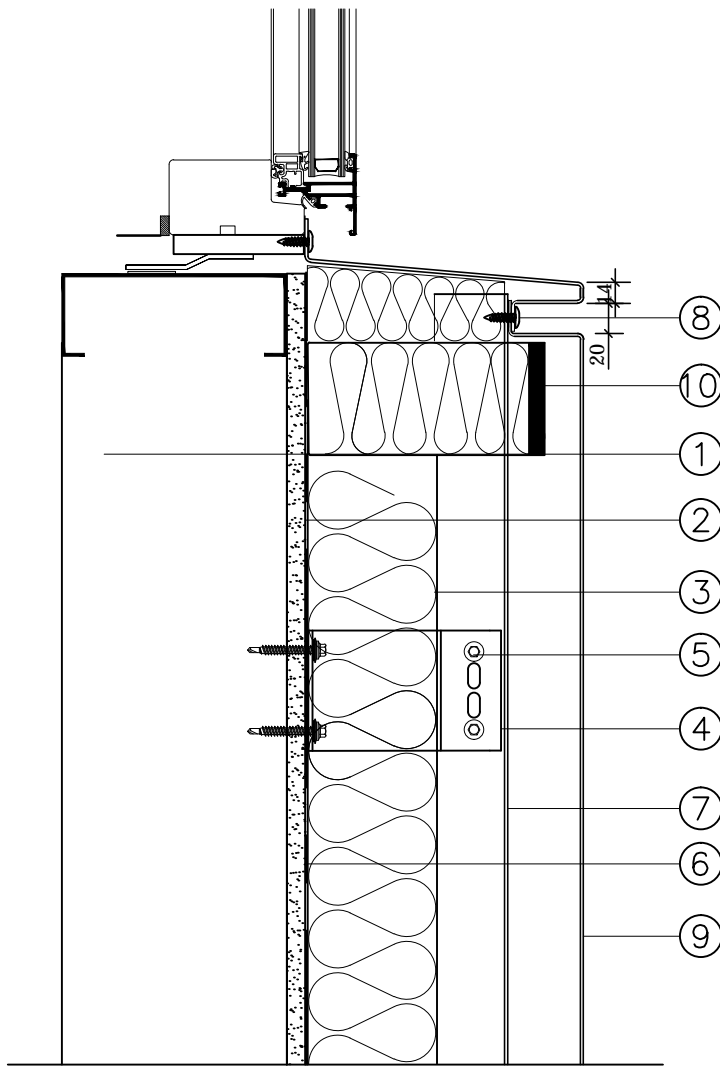


### AMS-03 WINDOW HEAD DETAIL

- ① SFS FRAME
- ② CEMENT PARTICLE BOARD
- ③ INSULATION
- ④ ALUMINIUM NVELOPE BRACKETS  
FIXED AT 600mm MAX  
CENTRES VERTICALLY.
- ⑤ SELF DRILLING STAINLESS  
STEEL SCREW
- ⑥ BREATHER MEMBRANE
- ⑦ ALUMINIUM NVELOPE  
VERTICAL RAIL
- ⑧ COLOUR CODED STAINLESS  
STEEL SCREW
- ⑨ 2MM ALUMINIUM SCREW  
THROUGH PANEL
- ⑩ OPEN STATE CAVITY BARRIER

### AMS-03 SCREW THROUGH SYSTEM


Client: Architectural Metal Solution	Job No: -	
Job Title: Screw through system	Date: 17/08/2018	
Drawing Title: AMS-03 Window Head Detail	Dwg. No.: AMS-03-07	
Material: 2mm Aluminium	Finish: PPC	
 <small>CONCEPT TO CONSTRUCTION www.amsproducts.co.uk</small>	Sheet Size: A4	Revision: -
	Scale: NTS	Drawn By: -



### AMS-03 WINDOW SILL DETAIL

- ① SFS FRAME
- ② CEMENT PARTICLE BOARD
- ③ INSULATION
- ④ ALUMINIUM NVELOPE BRACKETS  
FIXED AT 600mm MAX  
CENTRES VERTICALLY.
- ⑤ SELF DRILLING STAINLESS  
STEEL SCREW
- ⑥ BREATHER MEMBRANE
- ⑦ ALUMINIUM NVELOPE  
VERTICAL RAIL
- ⑧ COLOUR CODED STAINLESS  
STEEL SCREW
- ⑨ 2MM ALUMINIUM SCREW  
THROUGH PANEL
- ⑩ OPEN STATE CAVITY BARRIER

AMS-03 SCREW THROUGH SYSTEM

Client: Architectural Metal Solution	Job No: -
Job Title: Screw through system	Date: 17/08/2018
Drawing Title: AMS-03 Window Cill Detail	Dwg. No.: AMS-03-08
Material: 2mm Aluminium	Finish: PPC
 <small>CONCEPT TO CONSTRUCTION www.amsproducts.co.uk</small>	Sheet Size: A4
	Revision: -
Scale: NTS	Drawn By: -
<small>Tel: 01268 288661 Fax: 01268 287748</small>	